

ENVIRONMENTAL FOUNDATIONS:
STUDIES OF CLIMATICAL, GEOLOGICAL,
HYDROLOGICAL, AND PHYTOLOGICAL CONDITIONS
IN HESBAN AND VICINITY

Contributors

Patricia Crawford
Kevin Ferguson
Dennis Gilliland
Tim Hudson
Øystein Sakala LaBianca
Larry Lacelle

Volume Editors
Øystein Sakala LaBianca
Larry Lacelle

Associate Editor
Lorita E. Hubbard

Assistant Editors
Lori A. Haynes
Sandra L. Penley

Technical Assistants
James K. Brower
Oscar Canale
Tung Isaiah Duong

published with the financial assistance of the
National Endowment for the Humanities
and Andrews University

Andrews University Press
Berrien Springs, MI 49104

© 1986
All rights reserved. Published December 1986.
Printed in the United States of America.

92 91 90 89 88 87 86 7 6 5 4 3 2 1

ISBN 0-943872-15-4
Library of Congress catalog card number 86-072952

DS

153.3

.H47

v. 2

HORN

#16665853

Table of Contents

Chapter One Introduction	3
<i>Øystein Sakala LaBianca</i>	
Chapter Two Climate of Tell Hesban and Area	7
<i>Kevin Ferguson and Tim Hudson</i>	
Introduction 9	
Aspects of Paleoclimatology in Hesban and Vicinity 9	
Introduction to Macroprocesses 11	
Summer Air Masses and Movements 11	
Winter Air Masses and Movements 13	
Transitional Seasons 13	
Methodological Approach to Climate Classification for Hesban 15	
Temperatures at Hesban 16	
Precipitation at Hesban 18	
Condensation at Hesban 18	
Climate and Humans at Hesban 21	
Chapter Three Bedrock, Surficial Geology, and Soils	23
<i>Larry Lacelle</i>	
Introduction 25	
Bedrock Geology 25	
Bedrock Characteristics 28	
Influences of Bedrock Geology on Man 31	
Influences of Man on Bedrock Geology 35	
Surficial Geology 35	
Physiographic Subdivisions and Landforms 35	
Geomorphic Processes and Physical Characteristics of the Surficial Materials 38	
Influences of Surficial Geology on Man 45	
Influences of Man on the Surficial Geology 45	
Soils 45	
Soil Classification 45	
Soils Genesis 48	
Soils Physical Properties 53	
Soil Chemical Properties 53	
Influences of Soils on Man 57	
Influences of Man on Soils 57	
Chapter Four Surface and Groundwater Resources of Tell Hesban and Area, Jordan	59
<i>Larry Lacelle</i>	
Introduction 61	
Surface Water 61	
Influences of Surface Water Resources on Man 69	

Influences of Man on the Surface Water Resources	69
Groundwater	69
Influences of the Groundwater Resources on Man	72
Influences of Man on the Groundwater Resources	72
Chapter Five Flora of Tell Hesban and Area, Jordan	75
<i>Patricia Crawford</i>	
Introduction	77
Economic Uses of Plants	79
Plants Utilized as Food	79
Plants Utilized for Industrial Purposes	80
Plants Utilized for Domestic Purposes	80
Plants Utilized for Fodder and Forage	80
Species Descriptions	82
Cultivated Plants of Tell Hesban Area	97
Summary	98
Chapter Six Ecology of the Flora of Tell Hesban and Area, Jordan	99
<i>Lary Lacelle</i>	
Introduction	101
General Characteristics of the Flora	101
Vegetation Zonation and Potential Climax Species	101
Present-day Flora	105
Environmental Parameters and Their Effects Upon the Flora	105
Ecological Units of the Tell Hesban Area	110
Dry-Farmed, Cultivated Fields	110
Dry, Barren Hillsides	113
Moist Wadi Floors	113
Irrigated, Cultivated Fields	113
Summary	119
Chapter Seven Paleoethnobotany and Paleoenvironment	123
<i>Dennis R. Gilliland</i>	
Introduction	123
Materials and Methods	124
Results	125
Discussion	125
Comparison with the Previous Study	125
Ethnobotanical and Paleoecological Interpretations	125
Paleoenvironment	139
Conclusions	139
Chapter Eight Conclusion	143
<i>Oystein Sakala LaBianca and Larry Lacelle</i>	
Index	147

FAUNAL REMAINS:

TAPHONOMICAL AND ZOOARCHAEOLOGICAL STUDIES OF THE ANIMAL REMAINS FROM TELL HESBAN AND VICINITY

Edited by
Øystein Sakala LaBianca
Angela von den Driesch

Contributors
Joachim Boessneck †
Angela von den Driesch
Øystein Sakala LaBianca
Johannes Lepiksaar

Managing Editor
Ralph E. Hendrix

Assistant Editor
Lori A. Haynes

HESBAN 13

ANDREWS UNIVERSITY PRESS



BERRIEN SPRINGS, MICHIGAN

in cooperation with the
INSTITUTE OF ARCHAEOLOGY
ANDREWS UNIVERSITY

Published with the financial assistance of the
National Endowment for the Humanities
and Andrews University

ANDREWS UNIVERSITY
ARCHAEOLOGICAL MUSEUM

Illustrations, unless otherwise noted, are from the Horn Archaeological Museum (Heshbon Expedition archive). Cover design by Ralph E. Hendrix. Series cover design by Peter Erhard. Figure 1.1 and Table 1.1 digitized by James Robertson. Dedication drawing and plate 1.9 courtesy of Sven Mathiasson, Naturhistoriska Museet, Goteborge, Sweden. Plates 1.12 and 2.2-36 courtesy of Øystein Sakala LaBianca. Figures 2.1, 3.2 4.2-7, 5.2-10, 5.17, 5.18 digitized by Sharon Prest. Plates 6.1-10, 7.1-7, 8.1-21, and 9.1-95 courtesy of the respective chapter authors. Figures 8.1-55 by Jennifer Johnson after various originals.

A joint publication of the
Institute of Archaeology
and Andrews University Press
Berrien Springs, Michigan 49104-1700
FAX: (616) 471-6224

© 1995 by Andrews University Press
All rights reserved. Published July 1995
Printed in the United States of America

99 98 97 96 95 5 4 3 2 1

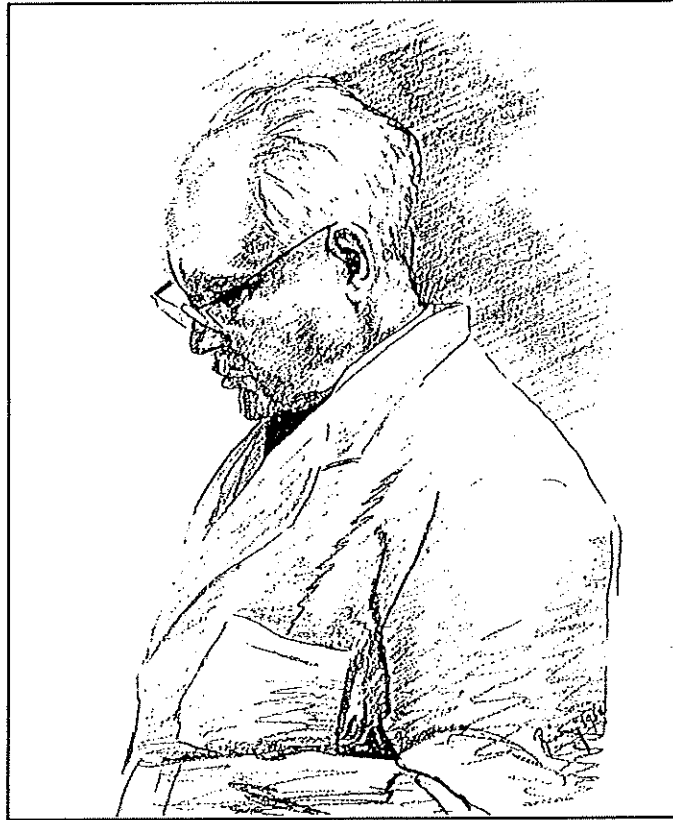
ISBN 0-943872-29-4
Library of Congress catalog card number 95-77028

DS
153.3
.447
v.13

33193747

HORN

DEDICATION



Johannes Lepiksaar

Johannes Lepiksaar was born in Rakvere, Estonia, on the 20th of November in 1907. He was educated at the University of Tartu (Dorpat), Estonia, where he received his *Mag. scient.* in 1930. In 1968, he was awarded a PhD *honoris causa* at the University of Goteborg, Sweden, and later, at the University of Lund in 1988.

He was first appointed to the Department of Zoology at the University of Tartu in 1929 as an assistant curator. In 1939, he became curator of the Zoological Museum at the same university. During the troublesome years of World War II, Lepiksaar left Estonia for Sweden. He long refused to become a Swedish citizen—hoping for things to change in the east. Although he lost a great deal upon leaving Estonia (especially his library), being a man of principle and determination, he started over again upon arriving in Sweden. Over the years, his entire apartment was turned into a rich library! After some years in Uppsala, he was appointed to the Natural History Museum of Goteborg in 1949, where he was in office until he retired in 1972.

When Johannes Lepiksaar abruptly left Estonia, he was followed by his wife Niina, who never left his side and on whom he depended in every aspect of daily life. Niina was a former student of her husband. She was also a biologist and skilled watercolor painter. Their home was open to scientists from all parts of the world. Niina, born in 1911, died in Goteborg in December 1994.

Lepiksaar is an internationally-recognized vertebrate zoologist—specializing in osteology. His fields of research include domesticated animals, fish osteology, palaeozoology, and systematics. He has also been involved in faunistics and zoogeography—especially faunal history. Johannes Lepiksaar lives in Goteborg.

Sven Mathiasson
Naturhistoriska Museet
Goteborg, Sweden

Øystein S. LaBianca
Institute of Archaeology
Berrien Springs, MI

Table of Contents

Foreword	<i>Randall W. Younker</i>	xxi
Preface	<i>Øystein Sakala LaBianca</i>	xxiii
Chapter One The Development of the Bone Work on the Heshbon Expedition	<i>Øystein Sakala LaBianca</i>	1
Introduction	3	
Beginnings: The First Field Season	3	
Development: The Second through Fourth Field Seasons	5	
The Climax: The Fifth Field Season in 1976	11	
A Challenge of Integration: The Final Publication Project	12	
Overview of Volume 13	12	
References	13	
Chapter Two Ethnoarchaeological and Taphonomical Investigations in the Village of Hesban	<i>Øystein Sakala LaBianca</i>	15
Introduction	17	
Objectives, Personnel, and Procedures	18	
The Hierarchy of Animals in the Village of Hesban (D. Fuller)	19	
Animal Census of the Village of Hesban (D. Downing, M. Casebolt, T. Fuentes)	22	
Sheltering of Animals in the Village of Hesban (Ø. LaBianca, A. LaBianca, D. Downing, M. Casebolt, T. Fuentes, P. Butterworth)	23	
Butchering of Animals in the Village of Hesban (D. Fuller)	25	
Meals Containing the Flesh of Animals Served in the Village of Hesban (M. Casebolt, T. Fuentes, A. LaBianca)	26	
Disposal of Animal Wastes by Hesban Villagers (Ø. LaBianca)	27	
Common Scavengers in the Village of Hesban (Ø. LaBianca)	27	
Taphonomical Survey in the Village of Hesban (Ø. LaBianca)	29	
Toward a Firmer Theoretical Rationale for the Study of Animal Bones from Historical Tell Sites	31	
References	32	
Chapter Three The Nature of the Zooarchaeological Record at Tell Hesban	<i>Øystein Sakala LaBianca</i>	33
Introduction	35	
Excavation Areas on Tell Hesban	35	
The Proportion of the Whole Tell Probed by the Excavations	37	
Bones Saved and Discarded from Different Excavation Areas	37	
The Stratigraphical and Chronological Context of Animal Bone Deposit	37	
The Depositional Context of Bones from the 1976 Season	42	
Survival Rates of Different Skeletal Parts	42	
Conclusions: Post-depositional Processes at Tell Hesban	43	
References	44	

Chapter Four The Effect of Post-depositional Contexts on the Preservation and Interpretation of Bone Samples: A Case Study <i>Øystein Sakala LaBianca</i>	45
Introduction 47	
The Two Micro-contexts 47	
Evidences of Post-depositional Disturbance 50	
Evidence for Cultural Patterning 50	
The Ratio of Sheep to Goats 50	
The Ratio of Males to Females 54	
Percentages of Young and Old Animals 54	
Percentages of Butchering Marks 58	
Cultural Patterning 58	
Conclusions 62	
References 62	
Chapter Five Final Report on the Zooarchaeological Investigation of Animal Bone Finds from Tell Hesban, Jordan <i>Angela von den Driesch and Joachim Boessneck†</i>	65
Introduction 67	
The Finds: A Synopsis 67	
Notes on Dating of Finds and Temporal Distribution 70	
Archaeoeconomic and Zoological Research Section 71	
Domestic Animals 71	
Wild Mammals 85	
Wild Birds 94	
Reptiles and Variegated Toads 97	
Fish 98	
Conclusions 102	
Notes 103	
References 103	
Chapter Six Evidence of Deer in the Early Historical Period of Tell Hesban, Jordan <i>Joachim Boessneck† and Angela von den Driesch</i>	109
Introduction 111	
Pre-historic Findings 111	
Historic Findings 111	
Examples from Palestine 111	
Deer Bones at Tell Hesban 113	
Species Comparison from Tell Hesban 113	
The Ancient Hesban Habitat 117	
Note 117	
References 117	
Chapter Seven Bones of the Weasel, <i>Mustela nivalis</i> Linné, 1766, from Tell Hesban, Jordan <i>Joachim Boessneck†</i>	121
Introduction 123	
Analysis of the Weasel Bones 123	
Material 123	
Dating 123	
Sex Features 124	
Differentiating Weasels 126	
Weasels and Polecats 126	
Weasel Subspecies 126	
Weasels and their Prey 126	
Note 126	
References 126	

Introduction 131

Birds 132

- Ostrich, *Struthio camelus syriacus* 132
- White Stork, *Ciconia ciconia* 133
- Greater (or Roseate) Flamingo, *Phoenicopterus ruber roseus* 133
- Domestic Goose, *Anser anser domesticus* 134
- Egyptian Vulture, *Neophron percnopterus* 134
- Griffon Vulture, *Gyps fulvus* 135
- Black Vulture, *Aegyptius monachus* 136
- Undetermined Eagle 136
- European Sparrowhawk, *Accipiter nisus* or Levant Sparrowhawk, *Accipiter brevipes* 138
- Black Kite, *Milvus migrans migrans* 138
- Great Falcon, *Falco* Species 139
- Old World (Eurasian) Kestrel, *Falco tinnunculus* 140
- Lesser Kestrel, *Falco naumanni* 140
- Chukar Partridge, *Alectoris chukar* 140
- Arabian Sand Partridge, *Ammoperdix heyi* 143
- Common Quail, *Coturnix coturnix* 143
- Common Crane, *Grus grus* 143
- Corncrake, *Crex crex* 144
- Coot, *Fulica atra* 144
- Great Bustard, *Otis tarda* 145
- Houbara Bustard, *Chlamydotis undulata* 145
- Cream-colored Courser, *Cursorius cursor* 146
- Stone Curlew, *Burhinus oedicephalus* 146
- Black-bellied Sandgrouse, *Pterocles orientalis* 147
- Domestic Pigeon, *Columba livia domestica* and Rock Dove, *Columba livia* 147
- Laughing Dove, *Streptopelia senegalensis* 149
- Barn Owl, *Tyto alba* 150
- Little Owl, *Athene noctua lilith* 150
- Short-toed Lark, *Calandrella brachydactyla* or Lesser Short-toed Lark, *Calandrella rufescens* 151
- Woodlark, *Lullula arborea* 153
- Warbler, *Hippolais* Species 153
- Wheatear, *Oenanthe* Species 154
- European Blackbird, *Turdus merula* 154
- Corn Bunting, *Emberiza calandra* 155
- Medium-sized Bunting, *Emberiza* Species 155
- House Sparrow, *Passer domesticus* 156
- Rock Sparrow, *Petronia petronia* 156
- Common Starling, *Sturnus vulgaris* or Rose-colored Starling, *Sturnus roseus* 157
- Jackdaw, *Corvus monedula soemmeringii* 157
- Brown-necked Raven, *Corvus ruficollis* 158
- Common Raven, *Corvus corax subcorax* 160
- Unidentified Birdbones 160
- Reptiles and Amphibians 160
 - Tortoise, *Testudo graeca terrestris* 160
 - Hardoun, *Agama stellio* 161
 - Scheltopusik, *Ophisaurus apodus* 162
 - Racer, *Coluber* species 162
 - Variegated Toad, *Bufo viridis* 163
- Conclusions 164
- References 165

Introduction 171

Methodical Remarks 171

Quantitative Analysis	171
Family Cyprinidae, Minnows	173
Taxonomical Remarks	173
Dispersal of Finds	174
Preservation and Its Probable Causes	174
Zoogeographical Remarks	175
Ecological Remarks	175
Economical Remarks	176
Occurrence at Tell Hesban	176
Family Clariidae, Catfish	176
Taxonomical Remarks	176
Dispersal of Finds	177
Preservation	177
Zoogeographical and Ecological Remarks	177
Economical Remarks	178
Occurrence at Tell Hesban	178
Family Mugilidae, Grey Mulletts	179
Taxonomical Remarks	179
Dispersal of Finds	180
Preservation	180
Zoogeographical Remarks	181
Ecological Remarks	181
Economical Remarks	181
Occurrence at Tell Hesban	181
Family Serranidae, Sea Perches or Basses	182
Taxonomical Remarks	182
Preservation	182
Zoogeographical and Ecological Remarks	182
Economical Remarks	183
Occurrence at Tell Hesban and Dispersal of Finds	184
Preservation	184
Zoogeographical, Ecological, and Economical Remarks	184
Occurrence at Tell Hesban	184
Family Sciaenidae, Drums and Croakers; <i>Johnius hololepidotus</i> (Lacépède), Meagers	185
Taxonomical Remarks	185
Stratigraphic Survey of Finds	185
Dispersal of Finds	185
Preservation	185
Zoogeographical and Ecological Remarks	185
Economical Remarks	186
Occurrence at Tell Hesban	186
Family Sparidae, Sea Breams	186
Taxonomical Remarks	186
Dispersal of Finds	186
Preservation	187
Zoogeographical Remarks	187
Ecological and Economical Remarks	187
Occurrence at Tell Hesban	187
Family Cichlidae, Combs	188
Taxonomical Remarks	188
Dispersal of Finds	189
Preservation	189
Zoogeographical Remarks	191
Ecological and Economical Remarks	192
Occurrence at Tell Hesban	192
Family Scaridae, Parrot Fish	192
Taxonomical Remarks	192
Dispersal of Finds	194
Preservation	195
Zoogeographical Remarks	196
Ecological and Economical Remarks	196
Occurrence at Tell Hesban	196

Family Scombridae, Mackerels and Tunnies	197
Taxonomical Remarks	197
Dispersal of Finds	203
Preservation	207
Zoogeographical Remarks	209
Ecological Remarks	209
Economical Remarks	209
Occurrence at Tell Hesban	209
Unidentified Fish Remains	209
References	210

Chapter Ten Interpretive Conclusions	211
<i>Øystein Sakala LaBianca</i>	

Introduction	213
The Predominance of Sheep and Goats	213
Mixed Agro-pastoral Dry Farming	213
Cycles of Sedentarization and Nomadization	214
Zooarchaeological Correlates of Cyles	215
Food System Cycles and the Natural Environment	216
References	216

Indexes	219
<i>Ralph E. Hendrix</i>	

General Index	219
Index of Bones and Body Parts	227
Index of Species, Common Names	230
Index of Species, Scientific Names	233